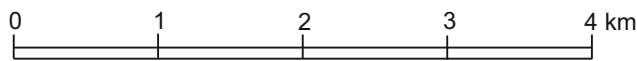
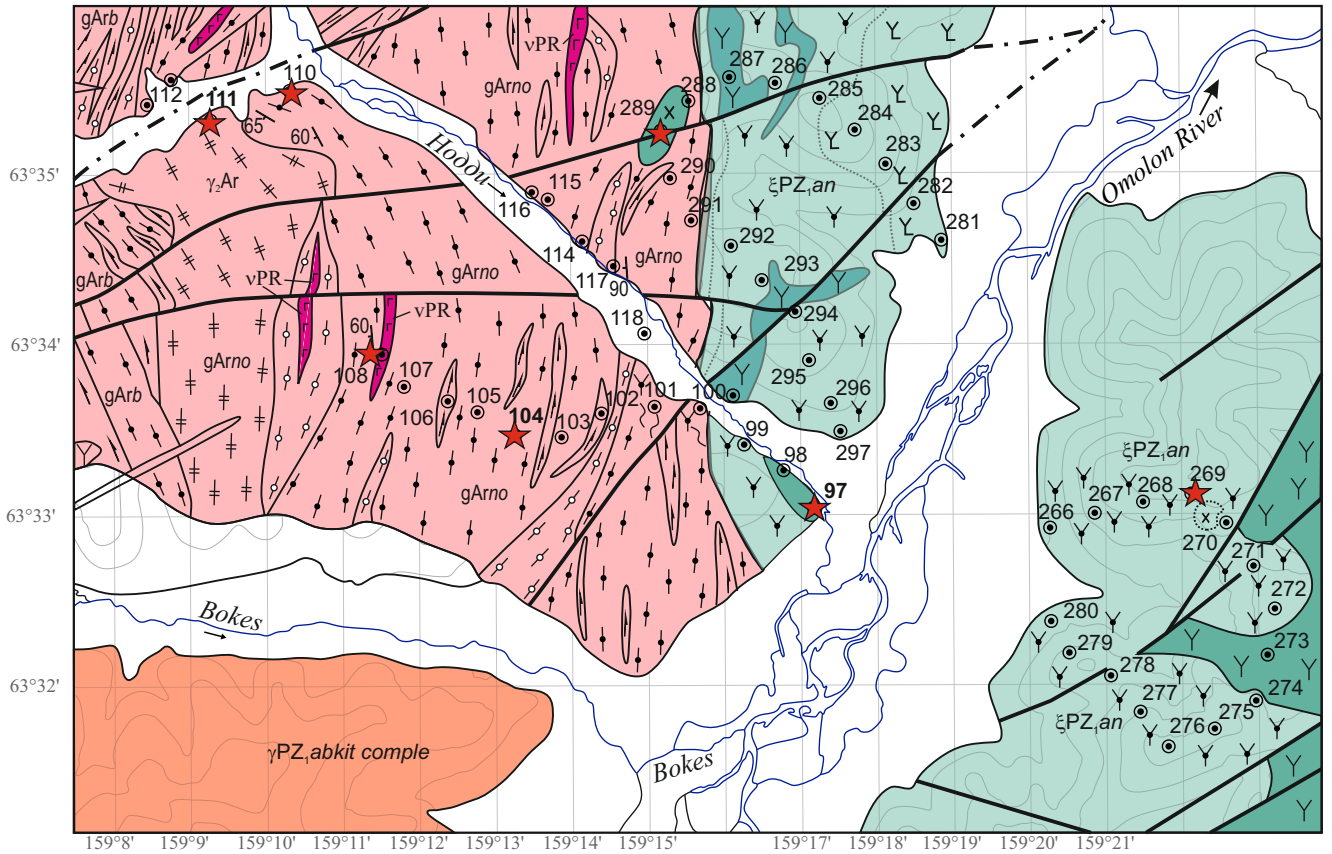


# Geological sketch map in the middle reaches of the Omolon River (Archean Noddin metamorphic formation and Silurian Anmandykan syenite complex)



## Noddin formation, Archean

- 1 biotite gneisses
- 2 leuco gneisses
- 3 amphibolites
- 4 augengneisses (ortho)
- 5 gabbro, Proterozoic Strelkin complex

## Anmandykan complex, Silurian:

- 6 syenite
- 7 alkaline syenite
- 8 quartz syenite
- 9 monzonite

- 117 samples for geochemistry
- 117 sample dated by zircon U-Pb (table2)
- faults
- geological boundaries, mapped and supposed
- relief